

11TH ANNUAL
NORTHWEST'S
BULL SALE

**COME TO
OUR SALE
AND WIN A
TRAILER!**
see page 13 for details

MONDAY, MARCH 25, 2013 - 1:00 PM
KRAMER'S BIG BID BARN
NORTH BATTLEFORD



Polled Hereford Bulls



Black Angus Bulls



Charolais Bulls



Simmental Bulls



Salers Bulls



Red Angus Bulls

FEATURING 6 BREEDS
ALSO FEATURING TOP QUALITY
COMMERCIAL REPLACEMENT HEIFERS

11TH ANNUAL
NORTHWEST'S
BULL SALE

MONDAY, MARCH 25, 2013 • 1:00 PM
KRAMER'S BIG BID BARN, NORTH BATTLEFORD

Stock available for viewing Sunday 1:00 pm-5:00 pm and Monday 9:00 am-Sale Time

AUCTIONEER

Neil Kramer
Phone 445-5000

RINGMEN

Kim Kramer
Brendan Kramer
Scott Meiklejohn
Michael Higgs

SALE REPRESENTATIVE

Curtis Deneiko
Phone 342-4208

Jeff Jamieson
Phone 397-2703

BLOCKMAN

Terry Cunningham
Phone 276-2416

SALE CONDUCTED BY

KRAMER
AUCTIONS LTD.
SINCE 1949

Phone 445-5000

P.O. Box 1807 North Battleford, SK

kramerauction.com

SALE SCHEDULE
SALE STARTS AT
1:00 P.M.



- Salers • Black Angus
- Red Angus • Polled Herefords
- Simmentals • Charolais
- Open Replacement Heifers

*Complimentary Coffee & Donuts
Supplied by*



Scotiabank™
Glaslyn Branch

*1:00 pm - 5:00 pm
Sunday Afternoon*

*Complimentary Beef-On-A-Bun
Compliments of*



RBC
Royal Bank

11:00 am - 1:00 pm Sale Day

*Complimentary Beef-On-A-Bun
Compliments of*

CUT KNIFE



11:00 am - 1:00 pm Sale Day

CONSIGNORS

SALERS

TALL TREE SALERS

Tim Thompson
Box 69, Choiceland, SK S0J 0M0
Phone 306-428-2773

BLACK ANGUS

HIGH TREE CATTLE

Jack & Terry Hochbaum
Box 242, Wilkie, SK S0K 4W0
Phone 306-843-2054 Fax 306-843-2059

SKYEBROOK ANGUS

Brian & Janet Misselbrook
Box 218, Choiceland, SK S0J 0M0
Phone 306-428-2081

TALL TREE ANGUS

Tim Thompson
Box 69, Choiceland, SK S0J 0M0
Phone 306-428-2773

TRIPLE T FARM

Trevor & Amanda Buchko
Box 1614, Battleford, SK S0M 0E0
Phone 306-937-2724

JANCLIFF ANGUS

Jeff & Heidi Jamieson
Box 279, Edam, SK S0M 0V0
Phone 306-397-2703

RED ANGUS

HIGH TREE CATTLE

Jack & Terry Hochbaum
Box 242, Wilkie, SK S0K 4W0
Phone 306-843-2054 Fax 306-843-2059

MANN BROS. RED ANGUS

Joel & Duane Mann
Box 327, Wilkie, SK S0K 4W0
Phone 306-843-2063

POLLED HEREFORDS

R&L HEATHER POLLED HEREFORDS

Ryan & Bob Heather
Box 312, Biggar, SK S0K 0M0
Phone 306-948-2714

SIMMENTALS

FOUR D RANCH

Curtis & Bev Deneiko
Box 244, Glaslyn, SK S0M 0Y0
Phone 306-342-4208 Fax 306-342-4401

BROOK'S SIMMENTALS

Steven & Konrad Seabrook
Turtleford, SK S0M 2Y0
Phone 306-845-2834 Cell 306-845-9434

GJED SIMMENTAL

Gerald & Edith Daoust
Box 248, Dalmeny, SK S0K 1E0
Phone 306-931-2730

CHAROLAIS

SWISTUN CHAROLAIS

Donnie Swistun
RR 1, North Battleford, SK S9A 2X3
Phone 306-445-9868 Cell 306-481-6680

BOX J RANCH

Craig & Shelly Jones
Box 123, Cochin, SK S0M 0L0
Phone 306-386-2728

**Each animal becomes the risk of the purchaser
as soon as they are sold.**

**All bulls going back to the farms of the
consignors until delivery MUST BE INSURED.**

**Insurance available on sale day:
GLASLYN AGENCIES 306-342-2133.**

**Arrangements for delivery of bulls
MUST BE MADE PRIOR TO SALE TIME.**

BRING YOUR TRAILER AND SAVE \$50 PER LOT

BUY A BULL WIN A TRAILER

See Details on Page 13



1 TTS SUPERSTAR 67Y

Registration Applied For TTS 67Y (RE) May 24, 2011

WINDBEC SUPERSTAR 1S
TCJ MR WASABI 1W
 TCJ MISS PRIMETIME 5P

WINDBEC MR J.J. 1J
 TCJ MISS MERLOT 2M
 CMS BLACK PLD JAMBALAYA 102J
 WAL ZARA 307K

TTS BLACK B75R
TTS WOW 50W
 MWC KARAOKE 74N

TTS MR BLACK 22N
 TTS NEW DECADE 10G
 MWC POLLED FERNANDO 40F
 CMS POLLED MISS KARAOKE 20K

BW 80 lbs

Purebred.

Here is a very nice package. His sire is very correct with excellent feet and legs. He was bull calf champion at the Canadian National Salers Show at Agribition in 2009. Superstar Dam is moderate framed and very sound.



Consigned by: **Tall Tree Salers**

2 TTS SUPERSTAR 69Y

Registration Applied For TTS 69Y (RE) June 04, 2011

WINDBEC SUPERSTAR 1S
TCJ MR WASABI 1W
 TCJ MISS PRIMETIME 5P

WINDBEC MR J.J. 1J
 TCJ MISS MERLOT 2M
 CMS BLACK PLD JAMBALAYA 102J
 WAL ZARA 307K

MWC POLLED FERNANDO 40F
MWC KARAOKE 74N
 CMS POLLED MISS KARAOKE 20K

PPS CZECH-MATE PLD CASINO 28C
 MISS 7 HALF DIAMOND 948C
 CMS POLLED TITANIC 822H
 WCH MISS FLOWER 58F

BW 80 lbs

Purebred.

Here is a very quiet, sound individual out of the best looking cow in my herd. His sire TCJ Wasabi was bull calf champion at the 2009 Salers Show at Agribition.



Consigned by: **Tall Tree Salers**

3 TTS BIG ROB 24Z

Registration Applied For TTS 24Z (RE) March 18, 2012

HBS PLD ROB 20R
HBS MR PLD UDALE 109U
 HBS MISS PLD LADY 8N

CMS NAGANO 74N
 CMS NEW ATTRACTION 40N
 TOP PLD LEGEND 97L
 HBS MISS POLLED ANN 3L

MAC POLLED MATADOR 208M
JOC MISS POLLED RUTHY 11R
 EPS PLD LOLYPOP 1L

JBM MCDOWELL 53J
 MAC POLLED CALCUTTA 79C
 JAM MR POLLED JORDAN 03J
 MADER POLLED MEDICINE 44J

BW 94 lbs

Purebred.

This bull is solid and sound as they come. Very powerful with lots of meat and nuts.



Consigned by: **Tall Tree Salers**



Lakeland
 Veterinary Services

10020 Thatcher Avenue • Box 1334 • North Battleford, SK S9A 3L8
 (306) 445-3757

www.lakelandveterinaryservices.com

BLACK ANGUS

4 HIGH TREE YUKON 144Y

Registration #1623836 JRH 144Y February 24, 2011

D H D TRAVELER 6807
G D A R TRAVELER 9161
 G D A R SAPPHIRE 728

Q A S TRAVELER 23-4
 BEMINDFUL MAID D H D 0807
 TRAVELER 1148 G D A R
 G D A R SAPPHIRE 5161 L T

CONNEALY FREIGHTLINER
HIGH TREE BLACKBIRD 32U
 MINBURN BARDOLIER 99K

BON VIEW BANDO 598
 JOANA ERICA OF CONANGA
 DOUBLE AA BARDOLIER 532'93
 MINBURN BLACKBIRD 87F

BW 95 lbs 205 day Wt 692 lbs **Purebred**
 A bull with lots of eye appeal from the Traveler 9161 AI sire which was not used much in Canada. His dam 32U is easy to keep and to work with.

BW: 2.7 WW: 38 YW: 67 MILK: 21 TM: 40 CE: 2.0 MCE 4.0



Consigned by: **High Tree Cattle**

5 HIGH TREE FREIGHTLINER 180Z

Registration #1683293 JRH 180Z January 30, 2012

BON VIEW BANDO 598
CONNEALY FREIGHTLINER
 JOANA ERICA OF CONANGA

TEHAMA BONDO 155
 BON VIEW DORA 56
 NICHOLS HEAVY DUTY X100
 JARNE ERICA OF CONANGA

S A V BISMARCK 5682
HIGH TREE POKEY 140X
 HIGH TREE POKEY 25U

G A R GRID MAKER
 S A V ABIGALE 0451
 BASIN MAX 602C
 MINBURN POKEY 152K

BW 83 lbs 205 day Wt 714 lbs **Purebred**
 A well balanced smooth Freightliner son out of a Bismarck heifer going back to Max 602C so you know that performance and calving ease will be there.

BW: 1.4 WW: 49 YW: 89 MILK: 20 TM: 45 CE: 7.0 MCE 10.0



Consigned by: **High Tree Cattle**

6 HIGH TREE FREE SPIRIT 118Z

Registration #1683325 JRH 118Z February 24, 2012

S A V NET WORTH 4200
S A V FREE SPIRIT 8164
 S A V EMBLYNETTE 5463

S A V 8180 TRAVELER 004
 S A V MAY 2410
 G A R INTEGRITY
 S A V EMBLYNETTE 0429

DA ES RO TWISTER 0627
HIGH TREE BLACKBIRD 64S
 JRH HIGH BLACKBIRD 44P

KRUGERRAND OF DONAMERE 490
 DE KAP RITO BURGESS 682
 NICHOLS EXTRA H6
 RED HI-TREE MARG

BW 82 lbs 205 day Wt 737 lbs **Purebred**
 Has a thick top and good hip. The son of Free Spirit. Calving ease on the bottom side with DA ES RO Twister and Nichols Extra H6.

BW: 1.6 WW: 51 YW: 95 MILK: 28 TM: 54 CE: 5.0 MCE 7.0



Consigned by: **High Tree Cattle**



Ramsay's Custom Hauling

- 53' Ground Load Cattle Semi
- 17 Bale Self-Load/Unload Bale Trucks
- 2 - 20' Gooseneck Stock Trailers
- High-Boy Bale Trailer

Steve Ramsay

Brian Ramsay

Ph: (306) 386-2213 or 386-2490

Cell: (306) 441-9327

Cochin, Saskatchewan

BLACK ANGUS

7 SKYEBROOK QUIET LAD 6Z

Registration #1693987 MIS 6Z (RE) January 18, 2012

NICHOLS NEXT STEP P129
NICHOLS QUIET LAD T9
 NICHOLS STACY M352

NICHOLS NEXT STEP M368
 NICHOLS ALYNE L130
 NICHOLS STERLING SILVER J257
 NICHOLS STACY J26

L T 598 BANDO 9074
SKYEBROOK BANDO COUNTESS 2W
 SKYEBROOK DESIGN COUNTESS 7T

S A F 598 BANDO 5175
 MILL COULEE BARBARA K 323
 BUSHS GRAND DESIGN
 SKYE-VIEW ROYAL COUNTESS 3N

BW 62 lbs **Purebred.**
 62 lb birth weight. If you need a heifer bull – this is the one. Thick and deep – not a lot of light under this fellow. He also lives up to his name – Quiet.

BW: -2.0 WW: 49 YW: 110 MILK: 26



Consigned by: **Skyebrook Angus**

8 SKYEBROOK RIGHT MAN 13Z

Registration #1693951 MIS 13Z (RE) January 30, 2012

LEACHMAN RIGHT TIME
SKYEBROOK RIGHT TIME
 SKYE-VIEW COUNTESS 7M

N BAR EMULATION EXT
 LEACHMAN ERICA 0025
 HILOW RIGHT TIME 1J
 SKYE-VIEW COUNTESS 2E

ISLA BANK BOTTOMLINE 5N
SKYEBROOK ERICA SADIE 5S
 SKYE-VIEW ANGEL 4N

CONNEALY BOTTOMLINE
 ISLA BANK PRIMROSE 11L
 HILOW RIGHT TIME 1J
 SKYE-VIEW ERICA 1J

BW 70 lbs **Purebred. Twin.**
 Another Leachman Right Time grandson with a little more stretch. Being a twin, he did very well considering he had to share his breakfast. Very nice disposition. 70 lb birth weight.

BW: 1.8 WW: 36 YW: 65 MILK: 11



LEACHMAN RIGHT TIME - GRANDSIRE TO 13Z

Consigned by: **Skyebrook Angus**

9 SKYEBROOK BLACK FLY 28Z

Registration #1693953 MIS 28Z (RE) March 01, 2012

WHITESTONE FLY TRAVELER 3006
SKYEBROOK FLY TRAVELER 8X
 SKYE-VIEW ANGEL 4N

HOFF HI FLYER S C 7134
 T C JESTRESS 6004
 HILOW RIGHT TIME 1J
 SKYE-VIEW ERICA 1J

BUSHS GRAD DESIGN
SKYEBROOK DESIGN COUNTESS 7T
 SKYE-VIEW ROYAL COUNTESS 3N

BON VIEW NEW DESIGN 1407
 BUSHS LADY DIVIDEND 872
 HILOW RIGHT TIME 1J
 SKYE-VIEW MISS GOVERNESS 2H

BW 86 lbs **Purebred.**
 The 1st grandson of Whitestone Fly Traveler 3006 we are bringing to town. A young March bull with stretch and depth combined. Very sweet disposition. 86 lb birth weight.

BW: 2.1 WW: 35 YW: 65 MILK: 17



Consigned by: **Skyebrook Angus**

CHEW ON THIS:

Customized forage options
 tailored to you.



From the Master Blends series to alfalfa seed, we enhance animal nutrition by providing unique forage solutions tailored to you. We back every one of our products with solid agronomic advice and the top forage warranty in the industry.

To build a custom recommendation contact your local ag retail, visit forages.viterra.ca, or call the Forage Help Desk at 1.800.661.3334

WHAT IT TAKES

ADVICE | OPPORTUNITIES | ACCESS

BLACK ANGUS

10 TTA MR WORTH 1Z

Registration Applied For TTA 1Z (RE) February 07, 2012

S A V NETWORKH 4200
ROYAL NET WORTH 21X
 ROYAL PRIDE DOLLY 38N

S A V 8180 TRAVELER 004
 S A V MAY 2410
 BSS LIMITED DESIGN
 ROYAL PRIDE DOLLY 4F

TTA DATELINE 3S
TTA FANCY 22W
 BWB LASS 32P OF BRUNO

CONNEALY DATELINE
 BWB 44'02 OF TRAFALGAR
 STEVENSON BRUNO 561G
 BWB LASS 7'96 OF TRIPLE THREAT

BW 75 lbs

Purebred.

Here is a very well balanced Net Worth grandson with a 75 lb birth weight and lots of eye appeal.



Consigned by: **Tall Tree Angus**

11 TTA BANDO 7Z

Registration Applied For TTA 7Z (RE) March 08, 2012

LLB 2166 BANDO 184S
LLB 184S BANDO 684U
 LLB QUEEN MOTHER 291M

S A V S175 BANDO 2166
 LLB BLACK CAP 219J
 DCC JAMAICAN 3J
 LLB PRINCESS 251E

ROSE HILL ADVANTAGE 18M
ROSE HILL BLACK BIRD 38S
 ROSE HILL BLACKBIRD 4N

ROSE HILL ADVANTAGE 14K
 ROSE HILL MISS VEGAS
 ROSE HILL ROYCE 4L
 PSF BLACKBIRD 18K

BW 90 lbs

Purebred.

This is a long bodied, well muscled bull out of a stout cow with a perfect udder. His sire has sound feet and legs and is a very easy keeper.



Consigned by: **Tall Tree Angus**

12 TTA MR WORTH 31Z

Registration Applied For TTA 31Z (RE) March 21, 2012

S A V NETWORKH 4200
ROYAL NET WORTH 21X
 ROYAL PRIDE DOLLY 38N

S A V 8180 TRAVELER 004
 S A V MAY 2410
 BSS LIMITED DESIGN
 ROYAL PRIDE DOLLY 4F

TTA DATELINE 3S
TTA MISS VISION 56W
 TTA MISS VISION 2S

CONNEALY DATELINE
 BWB 44'02 OF TRAFALGAR
 CONNEALY VISION 63
 BWB LASS 32P OF BRUNO

BW 88 lbs

Purebred.

Here is a very correct, well muscled bull. His mother is very sound with a perfect shaped udder. His sire is a S A V Net Worth son that is very quiet and built like a tank.



Consigned by: **Tall Tree Angus**

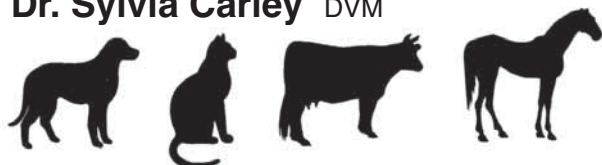
BATTLEFORDS ANIMAL HOSPITAL

7A 11204 Railway Ave. East • North Battleford, SK S9A 2R7

Phone: (306) 446-VETS (8387) • Fax: (306) 446-8388

Dr. Tom Schmidt DVM

Dr. Sylvia Carley DVM



BLACK ANGUS

13 TTT BOLT 10Z

Registration #1665575 TAB 10Z (RE) January 27, 2012

BALDRIDGE KABOOM K243 KCF
CONNEALY THUNDER
 PARKA OF CONANGA 241

JAUER 353 TRAVELER 589 27
 PLEASANTA OF CONANGA 736
 BON VIEW BANDO 598
 PARTINA OF CONANGA 6237

S A V 004 DENSITY 4336
TTT ERICA 4T
 BIG SKY ERICA 153

S A V 8180 TRAVELER 004
 S A V MAY 7238
 ABERAN DMM DECISION 26H
 BIG SKY ERICA 742

BW 87 lbs **Purebred.**
 10Z is a maternal half brother to our high seller last year. He is big hipped and super thick with a moderate 87 lb birth weight. This guy's momma just keeps stepping up and hitting them out of the park.
BW: 3.3 WW: 42 YW: 85 MILK: 23



Consigned by: **Triple T Farm**

14 TTT SURVIVOR MAN 15Z

Registration #1665569 TAB 15Z (RE) February 04, 2012

HF TIGER 5T
HF SURVIVOR 260W
 HF ECHO 187N

HF KODIAK 5R
 HF ECHO 84R
 TC FREEDOM 104
 DURALTA 14C ECHO 32E

B S S LIMITED DESIGN
BIG SKY ANDREA 470
 BIG SKY ANDREA 151

SVF GDAR 216 LTD
 B/R RUBY OF TIFFANY 5113
 ABERAN DMM DECISION 26H
 VDAR BIG SKY ANDREA 7014

BW 86 lbs **Purebred.**
 15Z isn't going to win no beauty contest, but if you're looking for a thick, moderate framed bull with good hair, here's your guy. His mother has been a steady producer with excellent daughters in our herd and bulls that are out working in others.
BW: 2.9 WW: 47 YW: 85 MILK: 22



Consigned by: **Triple T Farm**

15 TTT TIGGER 19Z

Registration #1665571 TAB 19Z (RE) February 17, 2012

HF TIGER 5T
HF SURVIVOR 260W
 HF ECHO 187N

HF KODIAK 5R
 HF ECHO 84R
 TC FREEDOM 104
 DURALTA 14C ECHO 32E

BOYD NEW DAY 8005
TTT WINNIE 7S
 BIG SKY WINNIE 482

A A R NEW TREND
 S V F FOREVER LADY 57D
 ABERAN DMM DECISION 26H
 BIG SKY WINNIE 018

BW 88 lbs **Purebred.**
 This calf is off our herd sire Survivor, an own son of HF Tiger - a bull who's writing his own chapter in Angus history. 19Z is smooth, deep and has tremendous hair. With strong EPDs and a quiet demeanor ... this bull would do you no wrong!
BW: 3.4 WW: 51 YW: 96 MILK: 23



Consigned by: **Triple T Farm**

Norsask FARM EQUIPMENT LTD.

Box 49, North Battleford, Saskatchewan, S9A 2X6
 Toll Free 1-888-446-8128 Telephone 445-8128 Fax 445-2722
 Email: norsasksales@sasktel.net



THE FORMULA FOR
 OUTSTANDING PERFORMANCE



Visit us on the Web at
www.norsaskfarmequipmentltd.com
 Case IH and Case Credit
 are registered trademarks of Case, LLC.



BLACK ANGUS

16 JANCLIFF INNOVATE 13Z

Registration #1673220 SCJ 13Z (RE) January 27, 2012

LAMBS INNOVATOR 86J
VALLEY BLOSSOM INNOVATOR 705T
 VALLEY BLOSSOM LASS 773P

MVHF INNOVATOR 49B
 LAMBS BAR LASS 19D
 REMITALL LIGHTENING 2L
 SANDY BAR LASS 95K

O G L BATTLE CRY 427 128
JANCLIFF ANNIE 15R
 EVERBLACK ANNIE 13A

NICHOLS EUREKA W57
 O G L DUSTY ROSE 128 902
 DMM ESSOTERIC 67R
 SDS MOUNTAIN VIEW ANN 29K

BW 86 lbs WW (Sept 13) 870 lbs

Purebred.

13Z has all the makings to be a complete herd bull. He comes from a highly productive Battle Cry cow that just keeps raising good calves. Expect 13Z to sire top end replacements and add pounds at the same time. Serious cattlemen, take a look at this cow bull!



Consigned by: **Jancliff Angus**

We're here to help.

Our lending services are designed to help you expand your current Ag business by assisting you in the purchase of additional equipment, land, or livestock.

We're about making your hopes and dreams for your farm come to life.

Members First. Imagine the possibilities.

www.innovationcu.ca 866.446.7001



OREN'S TRUCKING

• Auger Truck • Custom Hauling

OREN ROBINSON

Phone (306) **658-4755**

Box 370

Cell (306) **843-7020**

Landis, SK S0K 2K0

Fax (306) **658-2008**



Glaslyn Agencies

342-2133

RANDY ORANGE

*Insuring all your tomorrows
 by protecting you today*

www.glaslynagencies.ca

Medstead

Fax - 342-4311

Rabbit Lake

342-2157

824-2166

COMB-TRAC SALVAGE

(Combine & Tractor Parts)

Owners: ERIC PEARCE & BARRY SAUNDERS

Phone: 306-997-2209

Toll Free Phone: 877-318-2221

Fax: 306-997-2055

Box 255, Borden, SK S0K 0N0

Email: e.pearce@sasktel.net

Website: www.comb-tracsalvage.com

WE SELL QUALITY USED PARTS AT EXCELLENT PRICES



We are now dealers for
 Crystalyx Feed Tubs



COMB - TRAC SALVAGE

BORDEN SASK.

Used Farm Parts

10 miles NE

1-877-318-2221

RED ANGUS

17 RED HI-TREE YOUR LOADED 103Y

Registration #1623833 JRH 103Y February 22, 2011

RED HEARTLAND KNIGHT CHARM 11L
RED TER-RON FULLY LOADED 540R
RED TER-RON GOLDIE 240L

RED YY RED KNIGHT 640F
RED CARRUTHERS TRIBECCA 7F
RED LAZY MC DIVIDE 8J
RED TER-RON GOLDIE 240J

RED MLK CRK CUB 722
RED HI-TREE LANA 35S
RED HI-TREE LAVENDER 21L

RED GLACIER CUB 446
RED MLK CRK LAKOTA 152-HOBO
RED HI-TREE HIGH HEAVEN
RED HI-TREE JANA

BW 97 lbs 205 day Wt 620 lbs **Purebred.**
A big, thick, well muscled virgin two year old son of Fully Loaded, the Agribition Show Bull of the Year. His grand dam 21L is an elite cow.

BW: 2.2 WW: 57 YW: 84 MILK: 11 TM: 40 CE: 8.0 MCE: 0.0



Consigned by: **High Tree Cattle**

18 RED HI-TREE INDEED 148Y

Registration #1623872 JRH 148Y March 18, 2011

RED TOWAW INDEED 104H
RED EKW EARL OF RENFREW 8W
RED EKW OLIVIA 706T

RED CC EXPANSION 5E
RED TOWAW MOLLY 67C
RED MESSMER RED OPTION 9902
RED SIX LINE OLIVIA 213P

RED FRITZ HI HO 849
RED HI-TREE CHETA 68U
RED HI-TREE CHETA 8P

RED BJR HI HO 916
RED GLACIER KIMA 161
RED LITTLE DE BARNEY 426L
RED LITTLE DE CHETA 987F

BW 88 lbs 205 day Wt 612 lbs **Purebred.**
Thick with very correct structure, super deep ribbed and good hind quarter.

BW: -0.4 WW: 46 YW: 72 MILK: 20 TM: 42 CE: 1.0 MCE: 3.0



Consigned by: **High Tree Cattle**

19 RED HI-TREE PACKER 127Z

Registration #1683302 JRH 127Z February 05, 2012

RED MESSMER JOSHUA 019P
RED MESSMER PACKER S008
RED MESSMER MILLIE 124P

RED BECKTON JULIAN GG B571
RED MESSMER PANDORA M186
RED VGW TOP PICK 130
RED MESSMER MILLIE 9416

RED PASQUIA KNIGHT 44P
RED HI-TREE JEANIE 7T
RED LITTLE DE JEANIE 967F

RED KBJ KNIGHT 936L
RED PASQUIA FANCY LADY 6D
RED LITTLE DE STARBUCK 613C
RED DEBS JEANIE 01C

BW 81 lbs 205 day Wt 720 lbs **Purebred.**
Excellent herd sire prospect! He comes with frame, style, very correct structure and good EPD numbers. The Jeanie cows are a never miss.

BW: -1.0 WW: 50 YW: 81 MILK: 11 TM: 35 CE: 1.5 MCE: 5.0



Consigned by: **High Tree Cattle**

20 RED HI-TREE MR ZEE 109Z

Registration #1683310 JRH 109Z February 13, 2012

RED HLH BUSTER 406 603
RED BADLANDS MR BEEF 80S
RED BADLANDS KEEPSAKE 632

RED LCC HEAVEN OR BUST1000B
RED HLH MS ARROW 908 406
RED BJR JR 107
RED IDARED KEEPSAKE 8125

RED LCHMN GRND CANYON 1244G
RED HI-TREE LANA 39S
RED HI-TREE LANA 19L

RED BUF CRK CHF 824-1658
RED KRN REBA'S ROBIN
RED HI-TREE HIGH HEAVEN
RED HI-TREE LANA

BW 93 lbs 205 day Wt 749 lbs **Purebred.**
Big soggy meat machine from Mr Beef. Easy fleshing genetics don't come in a more prominent package.

BW: -0.6 WW: 65 YW: 113 MILK: 16 TM: 49 CE: 5.5 MCE: 7.0



Consigned by: **High Tree Cattle**

RED ANGUS

21 RED HI-TREE TREND SETTER 69Z

Registration #1683318 JRH 69Z February 18, 2012

RED BRYLOR NEW TREND 22D
RED RKY MTN TRENDSETTER 28J
 RED RKY MTN COPPER LADY 8D

SSS BLACK TREND 13B
 RED MEADOW CK MISS SEAMAN 31A
 RED BHC STRYKER
 RED RUTHE COPPER LADY 128A

RED LITTLE DE DYNAMICS 508M
RED HI-TREE LANA 19P
 RED HI-TREE LANA

RED BUF CRK DYNAMICS 3820
 RED LITTLE DE COUNTESS 778D
 RED DOUBLE C CHIEF 65E
 RED LITTLE DE LANA 937F

BW 86 lbs 205 day Wt 716 lbs **Purebred.**
 Is dark red with good hair. The Trendsetter calves have always been in the top of our pens.

BW: 0.7 WW: 50 YW: 76 MILK: 17 TM: 42 CE: -1.5 MCE: -1.0



Consigned by: **High Tree Cattle**

CAP & KELLN Solar Pumps

Clear Solutions.
Natural Choice.



FLOATING PUMPS
SUBMERSIBLE PUMPS

- Pumping Systems
- Water Storage Tanks
- Solar Pumping Systems
- Valves and Fittings
- Pasture Water Lines
- Pressure Tanks
- Ritchie Water Bowls
- System Design Work & Quotations
- Constant Pressure Pumping Systems

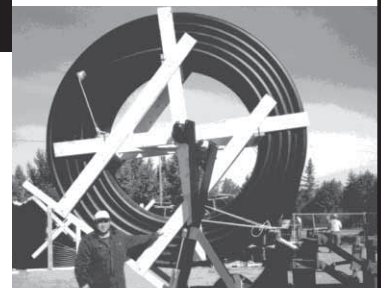
Call Anderson Pump House Ltd. Today!



**Anderson
Pump House Ltd.**

937-7741 or 1-800-263-7741
 9802 Thatcher Avenue North Battleford, SK
www.andersonpumphouse.com

PASTURE PIPELINES



PARKLAND FARM EQUIPMENT LTD.

Neil MacNaughton
Manager / Sales

Ph (306) 445-2427
 Fax (306) 445-1465
 Cell (306) 441-2758

Highway 4 North
 P.O. Box 157
 North Battleford, SK
 S9A 2Y1

email: neilm.pfe@sasktel.net



Classic Impressions

Embroidery - Hats - Jackets - Shirts - Team Uniforms
 Glass Etching - Promotional Products - Silk Screening
 Engraving - Ribbons & Rosettes

Let us help you promote your farm

Gloria Bajema

climpressions@yahoo.ca Phone/Fax (306) 843-2774
 Wilkie, SK S0K 4W0 1-800-615-2774

Northwest's Bull Sale 2013 would like to thank the following businesses for their jacket sponsorship.

Turtleford & District Co-op
Cunningham Custom Cattle Services
Cavalier Agrow Ltd.
West Central Pelleting Ltd.
Battlefords & District Co-op Agro Centre
Valley Ford Sales - North Battleford
Wendland Ag - Cut Knife
Laurent Dupuis 306-893-8190

AGRI Team Services Inc.
Hafford 306-246-4300 Glaslyn 306-342-4522
Dmytryshyn & Sons Contracting - Glaslyn
Rain Dance Transport (Livestock Hauling)
Rabbit Lake 306-824-4843
L & M Wood Products - Glaslyn
Terry Edwards 306-342-2080 ext 2
D & M Klassen Contracting Inc.
Don Klassen 306-441-4520

RED ANGUS

22 RED MANN BROS LOGAN 21Y

Registration #1713200 MABR 21Y January 30, 2011

RED BUFFALO CREEK VC CHIEF 105
RED GLACIER LOGAN
RED GLACIER REBALAS

OK DOUBLE CHIEF 4430
MD MADCAP RC 237
RED CREEK SIDE COPPER
GLACIER HI-RB-LS

RED PASQUIA ICON 34T
RED MANN BROS THELMA 2W
RED MANN BROS THELMA 2L

RED LETTER ICON 1R
RED PASQUIA FAYET 22L
RED HJA MR BOOM BOOM 3B
RED MANN'S THELMA MAJ 2B

BW 78 lbs WW 626 lbs

Purebred.

BW: -2.7 WW: 38 YW: 51 MILK: 20 TM: 39



Consigned by: **Mann Bros. Red Angus**

23 RED MANN BROS BOLD EDITION 93Z

Registration #1673813 MABR 93Z February 01, 2012

RED FINE LINE MULBERRY 26P
RED HOWE BOLD EDITION 80T
RED HOWE MS DUCHESS 144L

RED COMPASS MULBERRY 449M
RED DUS FAYETTE 8G
RED COMNOCK SARIO 252H
RED WBR DUCHESS 43'96

RED TJA KING ROB 5K
RED MANN BROS ANALYN 23M
RED MANN'S ANALYN

RED TJA KING ROB 27H
RED TJA ANN 18E
RED VIDAL'S 92A BLIZZARD
RED MANN'S ANNIE MAJ

BW 90 lbs WW 789 lbs

Purebred.

BW: 1.0 WW: 42 YW: 62 MILK: 17 TM: 37



Consigned by: **Mann Bros. Red Angus**

24 RED MANN BROS BOLD EDITION 6Z

Registration #1673808 MABR 6Z January 27, 2012

RED FINE LINE MULBERRY 26P
RED HOWE BOLD EDITION 80T
RED HOWE MS DUCHESS 144L

RED COMPASS MULBERRY 449M
RED DUS FAYETTE 8G
RED COMNOCK SARIO 252H
RED WBR DUCHESS 43'96

RED PASQUIA ICON 34T
RED MANN BROS SPARKLE 6W
RED MANN BROS SPARKLE 6N

RED LETTER ICON 1R
RED PASQUIA FAYET 22L
RED TJA KING ROB 5K
RED MANN'S COLD SPARK MAJ 6D

BW 86 lbs WW 823 lbs

Purebred.

BW: 1.1 WW: 52 YW: 79 MILK: 15 TM: 41



Consigned by: **Mann Bros. Red Angus**

25 RED MANN BROS ICON 34Z

Registration #1673815 MABR 34Z February 06, 2012

RED LETTER ICON 1R
RED PASQUIA ICON 34T
RED PASQUIA FAYET 22L

RED U-2 ICON 223M
RED LETTER LASSIE 75D
RED GEIS ZAMA PINE 190'97
RED PASQUIA FAYET 6C

RED SMW DIVIDE 82N
RED MANN BROS CONNIE 34U
RED MANN BROS CONNIE 34L

RED LOOSLI DIVIDE 507
RED MS KURUBA DDH 9A
RED BL POWER JAB 8J
RED MANN'S BONNIE

BW 77 lbs WW 742 lbs

Purebred.

BW: -1.8 WW: 48 YW: 69 MILK: 12 TM: 36



Consigned by: **Mann Bros. Red Angus**

NORTHWEST'S BULL SALE

POLLED HEREFORDS

26 R&L 46W YALE 103Y

Registration #P C02963931 RLH 103Y (RE) March 31, 2011

HAROLDSON WLB MUTUMBO ET 72M
MEADOW-ACRES 72M ELIXIR 46W
 MEADOW-ACRES 5G ADA 13K 38P

STAR SS THUNDER LT 62J
 HAROLDSON'S SARAH 2Z 29D
 BLAIR-ATHOL 65F ON LINE 13K
 MEADOW-ACRES 66E ADA 102M 5G

GHC RUSH WEST 73F
R&L 73F LEVI 59L
 R&L 1A MIST 40F

GHC WASHINGTON 47A
 TEE-JAY HIGH SOCIETY 16Z
 R&L ATLAS 80U 1A
 R&L TOP MIST 1Z

BW 95 lbs **Purebred.**
 R&L 46W Yale 103Y is a bull with a 95 lb. birth weight. He has eye pigment. He is a very correct bull with great eye appeal. He will make an excellent herd sire.



Consigned by: **R&L Heather**

27 R&L 10U YUKON 123Y

Registration #P C02963926 RLH 123Y (RE) April 10, 2011

ANL3N RIBEYE 14R
ZKMH 14R VEGAS 10U
 ZKMH 9K PENNY 6M

ANL SBS 122L CATTLELAC 3N
 WILGOR 889C NANCY 60D 38N
 REMITALL KOOTENAY 9K
 MICGIL'S FELICITY 700E 15K

GHC PREMIER ET 90N
R&L 90N MIST 80U
 R&L 31D MIST 15H

WTK 75A CONTINENTAL 66F
 WALPOLE PHILIS 13F
 HHPH P183 OLYMPUS 31D
 R&L 1A MIST 40F

BW 95 lbs **Purebred.**
 R&L 10U Yukon 123Y has a birth weight of 95 lbs. This long bodied bull with lots of pigmentation is out of a good milking cow. He is a free moving bull that will work well in any herd.



Consigned by: **R&L Heather**

28 R&L 10U YORK 147Y

Registration #P C02963924 RLH 147Y (RE) April 21, 2011

ANL3N RIBEYE 14R
ZKMH 14R VEGAS 10U
 ZKMH 9K PENNY 6M

ANL SBS 122L CATTLELAC 3N
 WILGOR 889C NANCY 60D 38N
 REMITALL KOOTENAY 9K
 MICGIL'S FELICITY 700E 15K

R&L 23C LARRIAT 2L
R&L 2L NORA 42N
 R&L 73F BANNER 21H

JSF 37 271 DEVO 23C
 R&L 50A CONNIE V 2C
 GHC RUSH WEST 73F
 R&L KEY BANNER 5A

BW 90 lbs **Purebred.**
 R&L 10U Yukon 147Y has a birth weight of 90 lbs. This moderate framed bull is well muscled, has a great hair coat and lots of pigment.



Consigned by: **R&L Heather**

Arnold's

SAND & GRAVEL LTD.

CORRAL CLEANING & SAFETY INSPECTION STATION

ARNOLD POOLE

STEVEN DUNLOP

Cell: (306) 441-1693

Cell: (306) 441-1628

Box 304 · Edam, SK S0M 0V0

Bus: (306) 397-5555 · Fax: (306) 397-5556

MNP LP

MNP is a proud sponsor of the Northwest's Bull Sale.

THINKING FWD.

BEST EMPLOYERS IN CANADA 2012

ACCOUNTING > CONSULTING > TAX
Kagan Sirett, Ag Specialist

MNP.ca
306.825.9855

FOR GREAT PRINTING WITHOUT THE BULL...

ULTRA PRINT



1981 - 100th Street North Battleford, SK
Phone (306) 445-5050 • Fax (306) 445-8771
Toll Free 1-888-25PRINT

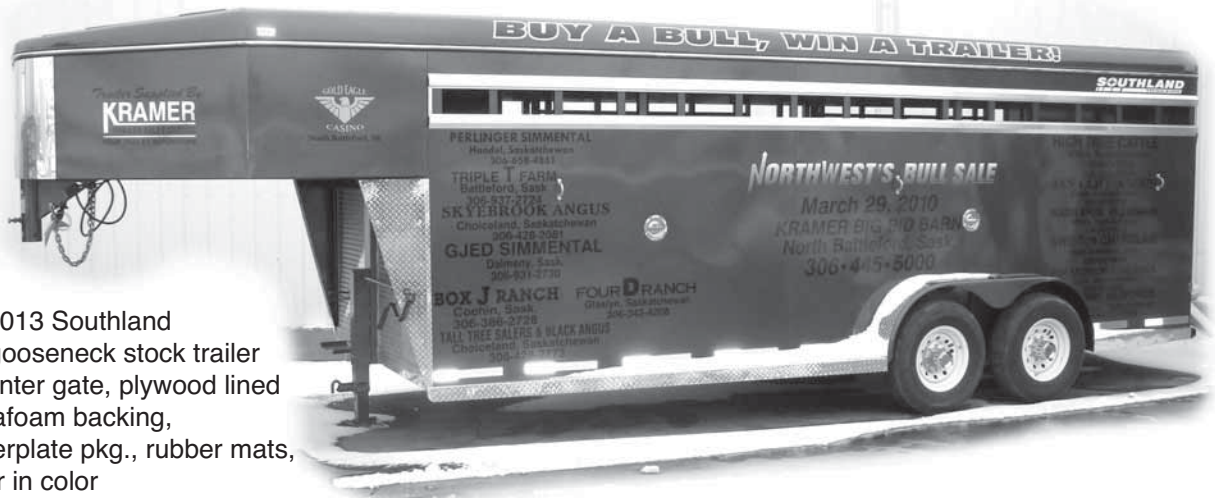
E-mail: info@ultraprint.ca • Website: www.ultraprint.ca

BUY A BULL - WIN A TRAILER

Purchase a bull at the Northwest's 2013 Bull Sale. For every \$300 you spend on a bull, you will receive one chance to win a brand new 2013 Southland 7'x20' gooseneck stock trailer loaded with options for one year!

SPEND \$3,000 GET 10 ENTRIES

This trailer won by Jiles Tebb of Landis, SK in the 2012 Northwest's Bull Sale.



Trailer: 2013 Southland 7x20 gooseneck stock trailer w/1 center gate, plywood lined w/styrafoam backing, checkerplate pkg., rubber mats, Pewter in color

Terms: After one full year from the date of the sale, the winner will have the option to buy the trailer. If not purchased by the winner, it will be returned to Kramer Auction & Trailer Sales for resale.

SIMMENTALS

29

FOUR D MR SUNNYFIRE 3Z

Registration #PG773689 FDSR 3Z January 10, 2012

FOUR D SUNNY FIRE 14T
FOUR D SUNNY FIRE 2X
 FOUR D MISS POWERLINE 18T

SUNNY VALLEY ROYCE 10R
 MISS KANDY 23K
 KENCO/MF POWERLINE 204L
 FOXDALE LADY 4L

DIAMOND J DYNAMITE 24S
FOUR D MISS DYNAMITE 12X
 MISS KISS 51K

TNT DYNAMITE BLACK L137
 DIAMOND J ZIMA 44K
 GOOD GUY LRF 12F
 MISS CINDY LRF 1F

BW 98 lbs WW 820 lbs YW 1210 lbs Adj YW 1296 lbs Purebred. Polled.
 Hey cowboys, look at this herdsire in the making. This guy will cross great with any color of a cow. 3Z is off of our high seller black bull that went through this ring in 2010. Don't let this one slip by your bid.

CE: 2.6 BW: 5.2 WW: 45.4 YW: 78.4 MCE: 4.5 MWWT: 33.2 MILK: 10.5



Consigned by: **Four D Ranch**

30

FOUR D MR KING 4Z

Registration #P772543 FDSR 4Z January 11, 2012

DRM MARCUS 14M
GRINALTA'S HP KING 126S
 GRINALTA'S POLLED HASALZ

GRINALTA'S GRIDIRON 403J
 DFM KATHLEEN 41K
 HASALZ
 GRINALTA'S POLLED FLECK

FOUR D BOLAGI 7S
FOUR D MS BOLAGI 12W
 FOUR D IROC NELLY 1N

BFP BOLAGI N522E
 MISS KANDY 23K
 IROC ROCKET 57K
 MISS LUCKY LRF 20L

BW 102 lbs WW 910 lbs YW 1370 lbs Adj YW 1432 lbs Fullblood. Scurred.
 Wow! Wow! There is nothing more to say about this guy than what you see in the picture. He has everything you want - smooth front end, deep middle, thick back end, extreme length, great hair coat and color. You won't miss him on sale day.

CE: 3.1 BW: 4.1 WW: 33.1 YW: 55.1 MCE: 1.8 MWWT: 35.0 MILK: 18.4



Consigned by: **Four D Ranch**

31

FOUR D MR REDLINE 13Z

Registration #PG772544 FDSR 13Z January 15, 2012

MEYER'S RED LINE
SAJ NIKON 5W
 D BAR C RED HELGA 645S

MEYERS BLACKTOP 206Y
 MEYERS DREAM
 DOUBLE BAR D BOLT 13P
 D BAR C RED HELGA 228M

DIAMOND J DYNAMITE 24S
FOUR D MS DYNAMITE 21W
 FOUR D SALLY 11S

TNT DYNAMITE BLACK L137
 DIAMOND J ZIMA 44K
 LCHMN BODYBUILDER 7303F
 MISS KORAN 47K

BW 96 lbs WW 710 lbs YW 1140 lbs Adj YW 1223 lbs Purebred. Polled.
 Very smooth, long and deep ribbed bull. Great genetics from top to bottom. We have been very happy with our new herdsire from SAJ Simmentals.

CE: 5.6 BW: 3.2 WW: 38.8 YW: 68.4 MCE: 4.5 MWWT: 22.6 MILK: 3.2



Consigned by: **Four D Ranch**

32

FOUR D MR RADIUM 14Z

Registration #G772546 FDSR 14Z January 15, 2012

CROSSROAD RADIUM 789U
CROSSROAD RAYDON 146X
 CROSSROAD U'LELO 844U

MF MR. EVAN 14P
 CROSSROAD PANDITA 308P
 DFM EDWIN 51E
 DFM BARBIE'S IMAGE 437D

DIAMOND J DYNAMITE 24S
FOUR D MS DYNAMITE 22X
 FOUR D MISS EMIL 1T

TNT DYNAMITE BLACK L137
 DIAMOND J ZIMA 44K
 FOUR D SIR EMIL 1P
 MISS LEXIE LRF 17L

BW 96 lbs WW 820 lbs YW 1250 lbs Adj YW 1360 lbs Purebred. Horned.
 Cattlemen, you want a bull that is the whole package, here he is. Solid red, good hair, very, very deep ribbed and lots of pounds in the back end. Look what you get when you cross a red factor cow and a great fullblood bull. WOW!

CE: 2.6 BW: 4.5 WW: 37.0 YW: 56.8 MCE: 3.0 MWWT: 26.8 MILK: 8.3



Consigned by: **Four D Ranch**

SIMMENTALS

33 FOUR D MR REAL DEAL 15Z

Registration #P772547 FDSR 15Z January 17, 2012

GIBBY'S NICHOLAS 302N
GIBBY'S REAL DEAL 25T
 GIBBY'S NABRISKA 16N

GRINALTA'S EXTRAORDINAIRE
 RICH MC MS EISENHERZ 4L
 EISENHERZ
 GIBBY'S EMPRESS ANN 31K

IROC ROCKET 57K
FOUR D IROC NELLY 1N
 MISS LUCKY LRF 20L

ANCHOR "T" LEGEND 7H
 FGAF PRINCESS DUKE 552H
 LRF BUSTER 103J
 MISS JACCEE LRF 7J

BW 98 lbs WW 840 lbs YW 1260 lbs Adj YW 1310 lbs Fullblood. Polled.
 What a bull! Yes he's smooth, polled, fullblood and high percentage Fleckveih. Most cattlemen say you lose too much with a polled fullblood, but this guy is proving you wrong. Check him out on sale day and prove it to yourself.
CE: 5.6 BW: 3.2 WW: 34.6 YW: 53.1 MCE: 2.5 MWWT: 31.7 MILK: 14.4



Consigned by: **Four D Ranch**

34 FOUR D MR REAL DEAL 19Z

Registration #P772548 FDSR 19Z January 19, 2012

GIBBY'S NICHOLAS 302N
GIBBY'S REAL DEAL 25T
 GIBBY'S NABRISKA 16N

GRINALTA'S EXTRAORDINAIRE
 RICH MC MS EISENHERZ 4L
 EISENHERZ
 GIBBY'S EMPRESS ANN 31K

SHAWACRES REUBEN 20R
SHAWACRES 57U
 BHR ADESINA SA R361

BAR 5 SA HERO 823M
 SHAWACRES NEDI 16N
 BHR ZULU G548E
 BAR 5 SA PEARL 832M

BW 94 lbs WW 840 lbs YW 1190 lbs Adj YW 1237 lbs Fullblood. Polled.
 This guy got all his traits honestly. Extremely great genetics from top to bottom. High percentage Fleckveih. This guy turned everyone's head from day one. Don't miss out on him, you won't be disappointed if you add him to your herd.
CE: 6.1 BW: 2.5 WW: 33.8 YW: 54.7 MCE: 2.3 MWWT: 27.9 MILK: 11.0



Consigned by: **Four D Ranch**

35 FOUR D MR MINOT 22Z

Registration #BPG773690 FDSR 22Z January 21, 2012

ROUNDHILL MR BLK MINOT
ROUNDHILL BLK MINOT 38X
 ROUNDHILL MS REDMINOT 36P

MCC MINOT 25L
 KH X 30J
 MCC MINOT 25L
 ROUNDHILL BLK FLECK 31L

RJLG ICE MAN
RJLG BACKLASH
 OPPS BAXTER E71

PVF-CW RAPID FIRE 0195K
 MFCC BLACK LASS 68J
 TSR BAXTER C103
 OPPS BLACK GOLDIE

BW 84 lbs WW 740 lbs YW 1170 lbs Adj YW 1253 lbs Purebred. Polled. Twin.
 Just imagine his performance numbers if he wasn't a twin. Very smooth front, long, deep and good back end. Very good genetics from top to bottom.
CE: 1.9 BW: 5.4 WW: 38.5 YW: 63.2 MCE: 5.2 MWWT: 27.3 MILK: 8.1



Consigned by: **Four D Ranch**

36 FOUR D MR MINOT 30Z

Registration #BPG773691 FDSR 30Z January 26, 2012

ROUNDHILL MR BLK MINOT
ROUNDHILL BLK MINOT 38X
 ROUNDHILL MS REDMINOT 36P

MCC MINOT 25L
 KH X 30J
 MCC MINOT 25L
 ROUNDHILL BLK FLECK 31L

3C FULL FIGURES C288 BLK
ULTRA MISS FIGURES 31P
 ULTRA MISS SAMMY GIRL 33M

EMMONS BLACK HERCULES
 3C DANMARKA 0922 BLKZ
 BEL BLACK SAMBUCA 530H
 TT PEARLS DOKOTA GIRL

BW 98 lbs WW 860 lbs YW 1270 lbs Adj YW 1344 lbs Purebred. Polled.
 Look at his performance numbers for being the youngest bull in our string. Lots of Fleckveih influence on the top end of his pedigree. You want some extra pounds on your black calves in the fall, don't miss out on this one.
CE: 6.1 BW: 3.0 WW: 36.3 YW: 56.3 MCE: 4.8 MWWT: 32.6 MILK: 14.4



Consigned by: **Four D Ranch**

SIMMENTALS

37

BROOK'S ZEDEKIAH 9Z

Registration Applied For ACU 9Z January 26, 2012

SUNNY VALLEY SARGENT 24S
PWK SARG 52T 31W
 PWK MS GIDSCO 122P 52T

DFM MARCUS 14M
 MTV BECKY
 GIDSCO APOLLO 3F
 PWK MISS PAULA 122P

BROOK'S NOAH 84N
BROOK'S UPPITY 4U
 BROOK'S PLENTY 40P

LPN FUTURE VISION 99K
 G-SEVEN MISS 3K
 LPN FUTURE VISION 99K
 PVSF MISS JENNIFER 44J

BW 100 lbs Sept 29 735 lbs Dec 29 1130 lbs Adj YW 1212 lbs Fullblood. Polled.

HOMOZYGOUS polled fullblood. "Zedekiah" is a bull that grabs your attention in the pen. Super dark liver red in color and thick hair coat. Very correctly made, excellent feet and legs. A long spined bull that strides out and moves very well, and as an added bonus he will poll all of his calves. His mother is moderate framed, dark red in color and comes from a line of excellent uddered females. Out of my (Sargent X Apollo) herdsire which should add a calving ease flare to the package without losing growth. This bull is full of potential for both commercial and purebred breeders alike! Check out our website at www.brookssimmental.wix.com/pollled_fullblood for more pictures and information.



Consigned by: **Brook's Simmentals**

38

BROOK'S ZURICH 54Z

Registration Applied For ACU 54Z February 18, 2012

LPN FUTURE VISION 99K
BROOK'S SYLVESTER 56S
 RTO 37K

IPU FUTURE VISION 35K
 MISS LPN 99H
 EISENHERZ
 TREELON MISS ECHO

ROUNDHILL MR MINOT 26R
BROOK'S UNICORN 62U
 LWJ MISS WILLOW 206K

MCC MINOT 25L
 MFL GILL 71G
 ANCHOR "T" METRO 4E
 GSB MISS EVEREST 7G

BW 98 lbs Sept 29 785 lbs Dec 29 1190 lbs Adj YW 1355 lbs Fullblood. Polled.

Polled/Scurred Fullblood. "Zurich" is a very complete bull. Wide topped, long spined, free and easy moving bull, good feet and legs, and an excellent hair coat. A moderate framed bull with excellent growth. Out of a very hard working clean uddered cow with a bright future ahead of her. His sire "Sylvester" is a Homo polled no miss kind of bull that always throws the good ones. The guess work is done on this one, buy with confidence. Check out our website at www.brookssimmental.wix.com/pollled_fullblood for more pictures and information.



Consigned by: **Brook's Simmentals**

GJED SIMMENTALS

Fullbloods Purebreds

Gerald & Edith Daoust

P.O. Box 248 Dalmeny, SK S0K 1E0

Phone 306-931-2730 Cell 306-222-1937

6 miles west of Saskatoon on Hwy #16 and 3 1/2 miles north on Dalmeny Road

39

GJED ROZCO 4Z

Registration #Applied for GJED 4Z January 10, 2012

RED BARON HR P101
TESS RED BARON 5T
 TESS MS BLACK 343P

CNS DREAM ON
 HS REFLECTIONS
 TNT DYNAMITE BLACK
 TESS U-DO-IT

SUNNY VALLEY RIGHT ON
GJED TIGER 49T
 GJED MOCHA 54M

LFE RED NEVADA
 SUNNY VALLEY NAOMI
 BBS ZIMA
 MS HOPE 2A

BW 105 lbs WW Oct 14 898 lbs Purebred. Polled.

Our first pick of the red-factor bulls. An outstanding thick, good haired, soggy bull that catches your eye in the pen. Awesome!



Consigned by: **GJED Simmental**

SIMMENTALS

40

GJED ROCKY 20Z

Registration #Applied for GJED 20Z January 20, 2012

SU ROCKY 223R
RUK MR WESTERN 2W
 OPS KRISTA 8R

IPU ENDEVOR 75M
 SU MARTINA 223M
 MTV GARNER
 OPS KRISTAN 26N

BLCC MONTANA 37M
GJED POLLYANNA 32P
 MS DD&E HEIRLOOM 23H

PRL HOUSTON 005H
 MS PARKHILL DIVIDER
 MFL UNIVERSE 28U
 MRLN PETRA

BW 103 lbs WW Oct 14 786 lbs **Fullblood. Horned.**
 A moderate framed bull that has good conformation, plenty growth and good color. His mother always brings in an attractive calf from pasture.



Consigned by: **GJED Simmental**

41

GJED McIVOR 26Z

Registration #Applied for GJED 26Z January 24, 2012

R PLUS McSTEAMY 8028U
TESS BLACK 21X
 TESS BLACK 36U

R PLUS BLACK EDGE
 MISS R PLUS 4126
 TNT TOP CUT P274
 BBN MISS DYNAMITE 85P

ER BLACK CISCO 532C
FOXY LADY GABI 55S
 HSN GAMBLER 5N

PTL POLLED STATS
 ER MISS MAX 54Z
 TJ 57J THE GAMBLER
 TJ NELLIE 56C

BW 106 lbs WW Oct 14 945 lbs **Purebred. Polled.**
 McIvor 26Z is sired by our hetero-black herdsire Tess 21X who was used on both heifers and cows with no calving problems. His offspring are correct made and show very good performance. His moderate framed black 55S dam produces the right kind.



Consigned by: **GJED Simmental**

42

GJED WESTERN STAR 33Z

Registration #Applied for GJED 33Z January 28, 2012

SU ROCKY 223R
RUK MR WESTERN 2W
 OPS KRISTA 8R

IPU ENDEVOR 75M
 SU MARTINA 223M
 MTV GARNER
 OPS KRISTAN 26N

SHAWACRES JAHARI 50L
GJED STARLIT 16S
 GJED MS. HILITE 29H

BHR DOORN
 MISS SHAWACRES HEIDI 1H
 BEL STEWARD 2ND
 MTV TESA 19F

BW 107 lbs WW Oct 14 840 lbs **Fullblood. Horned.**
 GJED 33Z The combination of RUK Western 2W and GJED Starlit 16S has certainly worked again. He looks and moves like a herdsire. His full sister was the high seller in the Mid Western Simmental Breeders this year, going to Richard Kulyk.



Consigned by: **GJED Simmental**

43

GJED McDUFFY 44Z

Registration #Applied for GJED 44Z February 15, 2012

R PLUS McSTEAMY 8028U
TESS BLACK 21X
 TESS BLACK 36U

R PLUS BLACK EDGE
 MISS R PLUS 4126
 TNT TOP CUT P274
 BBN MISS DYNAMITE 85P

PPSR NOPHALT 20H
SUNNY VALLEY BLK REBA 26R
 OJA MAREN 14L

LCHMN BLACK ASPHALT
 MISS PRICKLY PEAR 615F
 SSR RED GOLD D42
 OJA MAREN 1F

BW 106 lbs WW Oct 14 945 lbs **Purebred. Polled.**
 GJED McDuffy 44Z is also a deep, loose-hided bull with a great hair coat. Again sired by TESS Black 21X - a McSteamy son (Black Edge). His docile SV 26R dam is a true matron with ample milk and a good udder.



Consigned by: **GJED Simmental**



Pineland Co-op 'CHOICELAND CORNER'

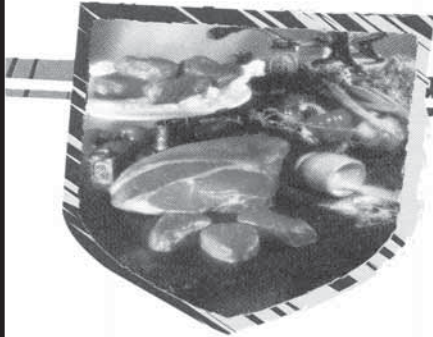


Hwy 6 & 55 Choiceland

- Full Service Pumps • Cardlock Pumps
- Convenience Store • Agro-Products & Farm Hardware

OPEN 7 am to 10 pm Daily

428-2175



KUHMART

Jerry & Jamey Kuhmayer
Owners/Operators

Grocery/Fresh Meat
Specialize in Home-made Sausage

103 Lofts Street, Glaslyn, SK

306-342-2171



1 Mile East Hwy #14
Box 1090, Unity, SK S0K 4L0
E-mail: trevor@northwestterminal.com

www.northwestterminal.com

TREVOR BOSER
Asst. Grain Operations

Bus: 306-228-3735
Fax: 306-228-3877
Res: 306-228-4403
Cell: 306-228-8200



VEIKLE SEEDS LTD.



CARL VEIKLE & LORNE VEIKLE
SEED PROCESSOR/AG CHEM SALES

*GRAIN LTD. (export)
*AGRO INC. (chem)

Box 548
Cut Knife, SK S0M 0N0
phone: **306-398-4714**
fax: **306-398-2567**
cell: **306-398-7713**
veikle.seeds@sasktel.net
www.veiklegrain.com

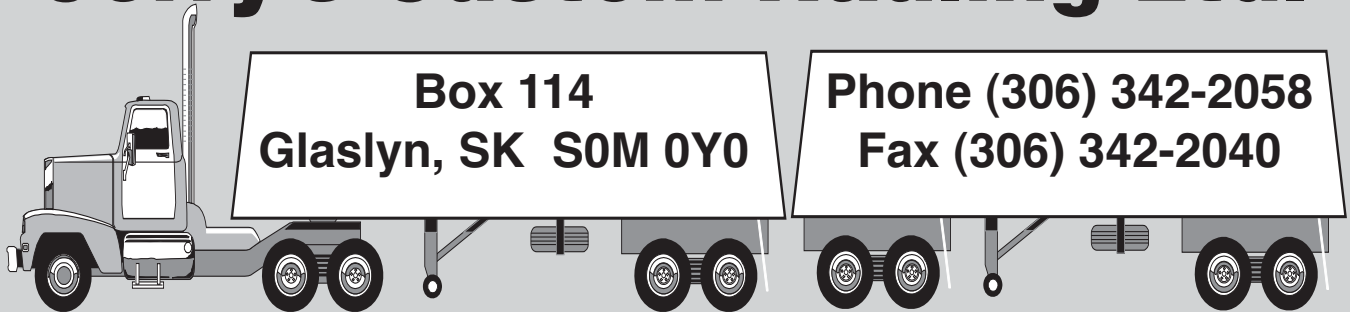


Unity Veterinary Services

Dr. Travis Ducherer

(306) 228-2491

Jerry's Custom Hauling Ltd.



SERVING THE FARMING COMMUNITY

Glaslyn Power & Equipment Inc.

★ Machine Shop ★ Welding ★ Mechanics ★ Diesel
All makes and models

BELARUS

McCORMICK

Ph. (306) **342-4808**
Fx. (306) 342-4911

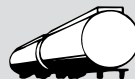
Box 459 Glaslyn, Saskatchewan S0M 0Y0

Les Johnson Res. (306) **342-4740**

Jaeger Transport (1988) Ltd.



GRAIN • FERTILIZER • PETROLEUM
ALBERTA • SASKATCHEWAN • MANITOBA



400 - 20th Street
P.O. Box 1294
BATTLEFORD, SK S0M 0E0

(306) 937-2661

Siklenka Seeds

P.O. Box 225, Glaslyn, SK S0M 0Y0
(306) 342-4290 (306) 342-2150

Quality Grass
and Forage Seed
at affordable prices

Custom Blending

Seed purities always available

CHAROLAIS

44 DPS ECHO 1Z

Registration #PMC 345629 DPS 1Z (LE) January 05, 2012

MXS ALLEGRO 701T
MXS CRAFTSMAN 910W
MXS ESPEON 122L

SVY DELIVERANCE PLD 401P
MXS MAUD 408P
HTA WHITEHOT 105A
MXS WYOMING TUNDRA 936J

S V Y AD INVINCIBLE P 748T
MXS SNOW WHITE 25X
MXS SNOW WHITE 661S

DBAR SURVIVOR 220M
PLEASANT DAWN PAM 214J
SPARROWS ALCATRAZ 18N
MXS SNOW WHITE 463P

BW 72 lbs

Purebred. Double Polled.

ADJ 205 DAY WT 667 lbs

Double vaccinated with Fusogard for footrot.

BW: -4.0 WW: 28 YW: 52 MILK: 20 TM: 34



Consigned by: **Swistun Charolais**

45 DPS CAESAR 5Z

Registration #PMC 345631 DPS 5Z (LE) January 13, 2012

MXS VERMILLION 527R
MERIT ROUNDUP 9508W
MERIT YOLANDA 7244T

SOS POLLED DETONATOR 8M
MXS ESPEON 122L
MERIT 1058L
MERIT YOLANDA 6116F

SVY DELIVERANCE PLD 401P
DPS GRACE 3T
MXS GRACED 253M

LT RIO BLANCO 1234 P
SVY CERTINSHESFLIRTIN 271M
PF IMPRESSED 620 P ET
MXS EXCLUSIVE GRACE 826H

BW 98 lbs

Purebred. Double Polled.

ADJ 205 DAY WT 770 lbs

Double vaccinated with Fusogard for footrot.

BW: 0.1 WW: 40 YW: 81 MILK: 23 TM: 43



Consigned by: **Swistun Charolais**

46 DPS WINSLOW 6Z

Registration #PMC 345632 DPS 6Z (LE) January 13, 2012

SVY FREEDOM PLD 307N
SVY FOCUS PLD 15X
SVY STARDUST 811U

HFCC PLD EVOLUTION 5L
SVY PURRFECT 184L
LT RIO BLANCO 1234 P
SVY STARDUST 390N

MXS KARMA 308N
DPS MISS KARMA 22S
EVC WHITE JUDGE 47H

SPARROWS WISDOM 335K
MXS GIVENCHY 150L
HTA WHITEHOT 105A
EVC JUDGE METRIC 15B

BW 84 lbs

Purebred. Double Polled.

ADJ 205 DAY WT 752 lbs

Double vaccinated with Fusogard for footrot.

BW: -2.7 WW: 34 YW: 66 MILK: 26 TM: 44



Consigned by: **Swistun Charolais**

47 DPS RINGO 7Z

Registration #QPMC 345633 DPS 7Z (LE) January 14, 2012

ROLLING D PARAMOUNT 424P
WHITECAP TRILOGY 204T
WHITECAP LASS 124J

HTA BLOCKBUSTER PLD 620F
ROLLING D FANCY 834H
PRAIRIEWIND ACHIEVER 20B
WHITECAP PACLADY 809X

SVS NOBLEMAN 25N
DPS CINNAMON 4X
DPS WINDSTAR 7U

MSW Y2K
HC VERONICA 11K
LT WYOMING WIND 4020 PLD
DPS MISS DETONATOR 9S

BW 82 lbs

Purebred. Double Polled.

ADJ 205 DAY WT 823 lbs

Double vaccinated with Fusogard for footrot.

BW: -2.9 WW: 41 YW: 75 MILK: 21 TM: 41



Consigned by: **Swistun Charolais**

CHAROLAIS

48 DPS GOLDRUSH 12Z

Registration #PMC 345634 DPS 12Z (LE) January 19, 2012

SVY FREEDOM PLD 307N
SVY FOCUS PLD 15X
 SVY STARDUST 811U

HFCC PLD EVOLUTION 5L
 SVY PURRFECT 184L
 LT RIO BLANCO 1234 P
 SVY STARDUST 390N

HTA WHITEHOT 105A
DPS BEAUTY 11T
 MXS WYOMING TUNDRA 936G

KJP SKY FIRE 51T
 SPARROWS PRISCILLA 8735W
 HTA TUNDRA PLD 222B
 MXS WYOMING BEAUTY 221G

BW 94 lbs
ADJ 205 DAY WT 742 lbs
 Double vaccinated with Fusogard for footrot.

Purebred. Double Polled.

BW: 1.0 WW: 44 YW: 80 MILK: 21 TM: 43



Consigned by: **Swistun Charolais** DPS BEAUTY 11T

49 DPS JASMIN 31Z

Registration #PMC 345642 DPS 31Z (LE) February 18, 2012

SVY FREEDOM PLD 307N
SVY FOCUS PLD 15X
 SVY STARDUST 811U

HFCC PLD EVOLUTION 5L
 SVY PURRFECT 184L
 LT RIO BLANCO 1234 P
 SVY STARDUST 390N

HTA TUNDRA PLD 222B
MXS WYOMING TUNDRA 936G
 MXS WYOMING BEAUTY 221G

NZL POLLED RAVEN 165Y
 CHARDEL LADY SAGE 1003Z
 LT WYOMING WIND 4020 PLD
 MXS BEAUTY 65D

BW 98 lbs
ADJ 205 DAY WT 772 lbs
 Double vaccinated with Fusogard for footrot.

Purebred. Double Polled.

BW: 0.8 WW: 45 YW: 77 MILK: 21 TM: 43



Consigned by: **Swistun Charolais**



*Clean View
 Grain Cleaning*

For more details and pricing phone

Blake Wakelin

at 306-398-2888, evenings or 306-843-7491, days

Mobile Grain Cleaning

Save on trucking costs, let us come to you!

- *Wheat*
- *Peas*
- *Barley*
- *Oats*
- *Lentils*
- *And More*



WEST CENTRAL PELLETING LTD.

TOTAL HERD PERFORMANCE

"Your supplier of quality beef pellets"

Use pellets to extend your pasture and stockpile in the summer for great prices

Wilkie, SK
 1-866-422-2242

← For Product Information and Sales Please call →

Wolseley, SK
 1-866-698-6401

CHAROLAIS

50 BOX J NO DOUBT 1Z

Registration Applied For ALJS 1Z (LE) January 24, 2012

EC NO DOUBT 2022P
GMC DOUBLE DOUBT 10T
 CAD GLITTER 12R

M6 GRID MAKER 104 PET
 EC LADY DUKE 2022P
 CAD SUGAR RAY 35N
 PLEASANT DAWN WENDY 97K

SVS NOBLEMAN 25N
PINEBLUFF PRINCESS 4T
 PINE BLUFF LICIA 3L

MSW Y2K
 HC VERONICA 11K
 MNE EXCLUSIVE 17E
 PINE BLUFF MANDY 6B

BW 112 lbs Oct 5 WW 985 lbs Purebred. Scurred.
 This bull's parents are both polled, but he has developed scurs. 1Z had the highest growth rate of my bulls at weaning
BW 2.1 WW 46.4 YW 90.3 MILK 25.9 TM 49.1



Consigned by: **Box J Ranch**

51 BOX J BLUEGRASS 12Z

Registration #PMC344622 ALJS 12Z (LE) February 08, 2012

LT BLUEGRASS 4017 P
SVY MAGNUM PLD 1X
 SVY STARSTRUCK 801U

LT ASSERTION 1277P
 LT PEARL'S BREEZE 2236 P
 WILDOR RAVEN 6M
 SVY STARSTRUCK 559R

BOX J MR REBEL 35N
BOX J MS STETSON 23T
 HXD MS FASTTRACKETTE 2M

SPARROWS REBEL 485K
 BOX J MS STETSON 34K
 BALDRIDGE FASTTRACK 82F
 HXD MS PERFECTO 21G

BW 100 lbs Oct 5 WW 850 lbs Purebred. Double Polled.
 This is an easy keeping, medium framed, deep bodied, thick bull. His good weight gain isn't accurately reflected in his EPDs.
BW -0.5 WW 37 YW 61 MILK 20 TM 38



Consigned by: **Box J Ranch**

52 BOX J MR JACKS 17Z

Registration #PMC344624 ALJS 17Z (LE) February 12, 2012

WHITECAP TRILOGY 204T
DPS VEGAS 12X
 DPS REBECCA 10U

ROLLING D PARAMOUNT 424P
 WHITECAP LASS 124J
 SPARROWS ALCATRAZ 18N
 MXS HANNA 623S

MXS MESSENGER 632S
BOX J MS MESSENGER 16W
 BOX J MS REBEL 15N

SVY DELIVERANCE PLD 401P
 MXS MEGARA 429P
 SPARROWS REBEL 485K
 BOX J MS EAGLE 18K

BW 90 lbs Oct 5 WW 760 lbs Purebred. Double Polled.
 This is a nice looking bull with a lower birth weight, lots of hair and a good quiet disposition.
BW -0.2 WW 39 YW 73 MILK 19.3 TM 39



Consigned by: **Box J Ranch**

T&P Enterprises Inc.

For All Your Earth Moving Needs

Cat Work, Loader Work, Grading, Excavating, Trenching,
 Bobcat Services, Gravel Hauling, Low Bed Services,
 Water & Vac Truck Services

- | | | |
|-----------------------|-----------------------|---------------|
| * Basements | * Bin Pads | * Landscaping |
| * Dugouts | * Containment Fields | * Trenching |
| * Bush & Tree Removal | * Environmental Berms | * Gravel |
| * Demolition | * Road Building | * Sand |
| | * Hydrovac Services | |

Call 306-862-7745



BATTLEFORDS

Bait and Tackle

Allen Mitchell

RR #1, Battleford, SK S0M 0E0

Phone: 306-937-2275

Fax: 306-937-7577

"YOUR ARCHERY SPECIALISTS"



The Cargill logo is a trade mark of Cargill, Incorporated, used under license, © 2017, Cargill Limited. All Rights Reserved.

At Cargill, we understand that the best way for us to succeed is to focus on your success. We believe it's all about you. And that's the difference.

To experience the difference, please contact your Cargill representative:

- Canwood: (306) 468-2123
- North Battleford: (306) 445-3621
- Unity: (306) 228-4144
- Vermilion: (780) 853-6200
- Marwayne: (780) 847-3879
- Lloydminster: (780) 872-5972

What's the difference?



4T CONTRACTORS INC.

Wendell Trotchie

(306) 222-8197

(306) 329-4485

Fax: (306) 329-2453

4tcontractorsinc@sasktel.net

Box 32

Asquith, SK S0K 0J0



Bobcat Services

- Build cattle, big game fence & corrals
- Pound posts
- Drill holes
- Clean corrals 4 spreaders & 2 Bobcat with rubber tracks
- Custom mulching
- Metal & vinyl siding
- Metal & asphalt roofs
- Will build additions on homes, cattle sheds, shops, etc.

No job is too small, we do any kind of work.

You have everything to **GAIN!**
When you use Performance Rations by



Consult these Beef Nutrition Experts and Masterfeeds Mills, or your nearest Masterfeeds Dealer, for your Beef Nutrition Solutions.

Reps -South Sask.

Janie Jensen 535.0969
Jerry Glab 891.8914
Daniel Dueck 741.9775

Reps- North Sask.

Kurtis Reid 220.2226
Roger Kostron 491.9096

Masterfeeds- Regina 1.877.440.2727
Masterfeeds – Saskatoon East 1.800.667.4757
Masterfeeds – Saskatoon West 1.306.384.2144
Masterfeeds – Humbolt 1.306.682.2668



Western Grain & Processing Division

We have the following seed available:

— **CDC AUSTENSON** —

This feed barley will yield.

— **CDC COWBOY** —

Forage Barley for silage, great biomass yield.

— **Ask about forage peas for silage** —

Toepfer International | North Battleford Branch
8 km north of North Battleford on Hwy #4 at Hamlin

Bus: (306) 445-4022 | Cell: (306) 441-6699

duttonv@toepfer.com

www.westerngrain.com

TERMS & CONDITIONS

TERMS - The terms of the sale are cash or cheque payable at par at Kramer's Big Bid Barn unless satisfactory credit arrangements have been made previous to the sale. The right of property shall not pass until after settlement is made. Kramer Auctions Ltd. reserves the right to require a certified cheque as settlement before releasing any sale cattle. Should any purchaser fail to settle for his purchase Kramer Auctions Ltd. reserves full power to resell the animal to the best advantage either publicly or privately, without further notice. Any loss arising from such resale together with keep and all other expenses shall be payable by the defaulter. All settlements must be made with the clerks of the sale before any cattle will be released.

BID - Every animal consigned to the sale must be sold by auction. No private sales will be allowed except as otherwise provided for in the terms and conditions. No by-bidding will be permitted. Each animal will be sold to the highest bidder.

DISPUTES - In cases of disputes, bidding will be reopened between the parties involved. If no further bid is made the buyer will be the person from whom the auctioneer accepted the last bid. The auctioneer's decision in such matters will be final.

PURCHASER'S RISK - Each animal becomes the risk of the purchaser as soon as sold. Animals will be cared for at the purchaser's risk for a reasonable length of time.

ANNOUNCEMENTS from the auction block will take precedence over the printed matter in this catalogue. Buyers are therefore cautioned to pay attention to any such announcements.

CERTIFICATE OF REGISTRY - A registration/recordation certificate issued and duly transferred will be furnished to the buyer of each animal after settlement has been made. It is the responsibility of the buyer to determine the acceptance of this certificate.

SHIPPING - Assistance will be given in making shipment after the sale but no risk is assumed by Kramer Auctions Ltd. or Seller. Expenses incurred are the responsibility of the purchaser. Purchasers are requested to furnish shipping instructions when making settlement.

BREEDERS GUARANTEE - As per Breed guidelines. Copies are available at the sale settlement desk to be picked up by the buyer at any time.

HEALTH - It is the buyer's responsibility to determine health requirements for importing any animal into his province or state. Kramer Auctions Ltd. assumes no responsibility for the health status of any animal in the sale.

ACCIDENTS - Although every precaution will be taken to protect the safety and comfort of buyers, neither Kramer Auctions Ltd. or the auctioneer assumes any responsibility in this matter and disclaims any liability legal or otherwise in the event of accident or loss of property.

RIGHTS AND OBLIGATIONS - The above terms and conditions of the sale shall constitute a contract between the buyer and the seller and be equally binding to both. Resale of animals following purchase in this sale shall constitute a separate transaction and the rights and obligations of the two parties connected thereto are not covered by the terms and conditions of this sale.

KRAMER AUCTIONS LTD. IS AGENT ONLY - It is to be clearly understood that Kramer Auctions Ltd. is only acting as a medium between buyer and seller and is not in any way responsible for any failure on the part of either party to live up to his obligations, neither does Kramer Auctions Ltd. assume any financial obligations to collect or enforce collection of any monies between parties, and any legal action that may, in exceptional cases, be taken, must be between buyer and seller.

The Auctioneer shall have the right to refuse bids from anyone who has a previous record of default in payment or who has not made proper credit clearance prior to the sale with the owner or Sale Managers.

RETURN TO:

Curtis & Bev Deneiko
Box 244, Glaslyn, SK
S0M 0Y0

KRAMER

AUCTIONS LTD.

SINCE 1949



HEAD OFFICE: Hwy #16 North Battleford, SK
1-800-529-9958 306-445-5000

SOUTHERN REGION OFFICE: Eatonia, SK
1-866-967-7999 306-967-2818

kramerauction.com

AUCTION SALES



3 Generations Strong

**Call
to discuss
your
auction
plans.**

**View
numerous
farm auctions
across
Western
Canada
at**

kramerauction.com

REAL ESTATE



KRAMER

AUCTIONS REAL ESTATE DIVISION INC

- Real Estate Auctions
 - Land Lease Auctions
 - Traditional MLS Sales
- Licensed Real Estate Brokerage

Upcoming

*Real Estate Auctions and
Current MLS Listings:*

**March 27, 2013
Land Auction Event
Kramer's Big Bid Barn**

Various parcels of Saskatchewan land for sale
& lease by auction

**April 25, 2013 - TL Ranch
Internet Only Auction**

13 quarters of very well managed grassland in
one block near Glaslyn, SK
1344 CULT ACRES - seeded to grass
Piped watering system to various areas
coordinated with grazing pattern. Large
rancher style bungalow (approx 1950 s.f.)
Single attached garage. Various outbuildings
including metal clad barn.

**May 1 - May 8, 2013
Highway Commercial Property
Internet Only Auction**

3 Commercial Lots
in Battleford Industrial Park

For more info go to

kramerauction.com

TRAILER SALES



KRAMER

TRAILER SALES NORTH BATTLEFORD SASKATCHEWAN

*Your one stop trailer shop
in Saskatchewan with the
largest inventory of:*

SOUTHLAND
TRAILERS

ROYAL
CARGO

NORBERT'S
Trailers

DURALITE
ALUMINUM TRAILERS

CARGO PRO
TRAILERS

SNO PRO
TRAILERS

SURE-TRAC

Online Showroom at

kramerauction.com

To be added to our mailing list, call our North Battleford office at 1-800-529-9958